

. AGNEWS .

EST. 1817

THOS. AGNEW & SONS LTD.
6 ST. JAMES'S PLACE, LONDON, SW1A 1NP
Tel: +44 (0)20 7491 9219.
www.agnewsgallery.com

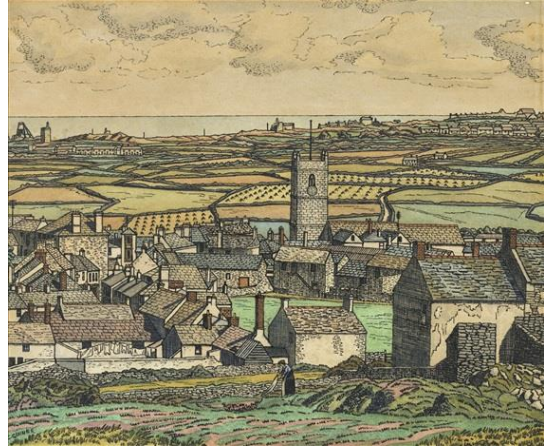
Charles Ginner, A.R.A. (Cannes 1878 – 1952
London)

St. Just in Cornwall – A landscape with cottages

Signed 'C. GINNER' (lower left)

Pen and ink and watercolour on paper

9 ¾ x 11 ¾ in. (25 x 30 cm.)



Provenance

Gifted by the Artist to Mrs. Frank Rutter.
The Fine Art Society, 1985.
Henry Wyndham Fine Art Ltd, London.
Private Collection.

Exhibited

London, St George's Gallery, *Charles Ginner and Randolph Schwabe*, March 1926 (details untraced).
London, The Fine Art Society, *Charles Ginner*, 7th - 25th October 1985, cat. no.13, illustrated.

Literature

Charles Ginner, *List of Paintings, Drawings, etc. of Charles Ginner*, Book II, 1919-1924, p. 135.

Primarily a townscape and landscape painter, Charles Ginner grew up in France where his father, a doctor, practised, but settled in London in 1910. He was heavily influenced by Vincent van Gogh, Paul Gauguin and Paul Cézanne. In 1909, Ginner visited Buenos Aires, Argentina, where he held his first one-person show, which helped to introduce post-Impressionism to South America.

· AGNEWS ·

EST. 1817

THOS. AGNEW & SONS LTD.
6 ST. JAMES'S PLACE, LONDON, SW1A 1NP
Tel: +44 (0)20 7491 9219.
www.agnewsgallery.com

He was a friend of Harold Gilman and Spencer Gore and through them was drawn into Walter Sickert's circle, becoming a founder member of the Camden Town Group in 1911 and the London Group in 1913. In 1914 in the *New Age* he spelt out the artistic creed known as *New Realism*. In the same year he showed jointly with Gilman at the Goupil Gallery. His Continental background made him a respected figure among his associates, who were united by an admiration for French painting.

Ginner painted buildings in an urban context, and his watercolours such as the present work are unmistakable, with meticulous detailing of trees and buildings.