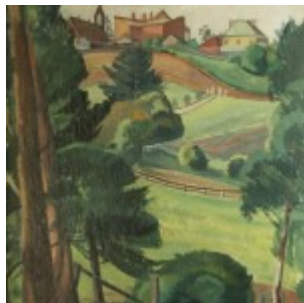


London to Sydney

A Special Preview of Highlights

28 Sept – 12 Oct 2011

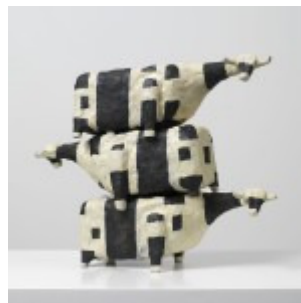
Highlights of *London to Sydney* include a broad selection of Nolan paintings representing some of his most significant themes. These include the magnificent and moving *Burke and Wills Expedition* painted in 1962 and from the same year the colourful and striking *Ned Kelly*, crowned as *King Kelly*. Two lyrical examples from the *Leda and the Swan* series and a charging *Elephant* from the *African* series show the variety of the artist's imagination. In addition there are several works from Nolan's opera and ballet designs reflecting his passion for music and the dance. The earliest painting in the show is by Roy de Maistre, *View from a North Shore Garden, Pymble*, c. 1928, a rare and fine example from his Sydney period. We have collected a dozen works on paper by Drysdale for this exhibition which highlights his skill as a draughtsman and observer. Other featured Australian artworks will include an evocative Ian Fairweather painting of Hangchow dating from the mid 1940s, a haunting Charles Blackman *Schoolgirl* painting from 1952 and several fine Arthur Boyd paintings from his popular *Shoalhaven* period.



Roy de Maistre



Ian Fairweather



John Kelly



Sidney Nolan

Agnew's has long enjoyed a close relationship with the Australian art market. More recently, Agnew's interests spread to the leading 20th century Australian artists including Sidney Nolan, Russell Drysdale, Fred Williams, Rosalie Gascoigne and Bill Robinson. In particular, we were for a number of years agents for the Nolan Estate and held an outstanding exhibition of *Nolan's Nolans* in 1997, as well as selling many other paintings by him to collectors and museums in the UK and the USA as well as back to Australia. The gallery currently represents the contemporary painter and sculptor John Kelly worldwide. The arrival of Georgina Pemberton, who joined Agnew's as a Director in 2010 and who curated *London to Sydney*, has served to strengthen the gallery's long term commitment to the Anglo-Australian artistic dialogue.

35 ALBEMARLE STREET, LONDON, W1S 4JD

TEL. +44 (0) 20 7290 9250

FAX. +44 (0) 20 7629 4359

agnews@agnewsgallery.co.uk

www.agnewsgallery.com